

LC Series Universal Controller



Lumina Power announces the new LC series controller that easily connects your computer to any Lumina Power power supply. This new interface device converts the standard input and output signals from the power supply to an Ethernet connection allowing for GUI control over the various functions of the supply. Users can now control output voltage and current along with enable, interlock and pulsing. Depending upon power supply model, monitor functions include output voltage, current, pulse width, repetition rate, faults and end of charge. Easy to use App included.

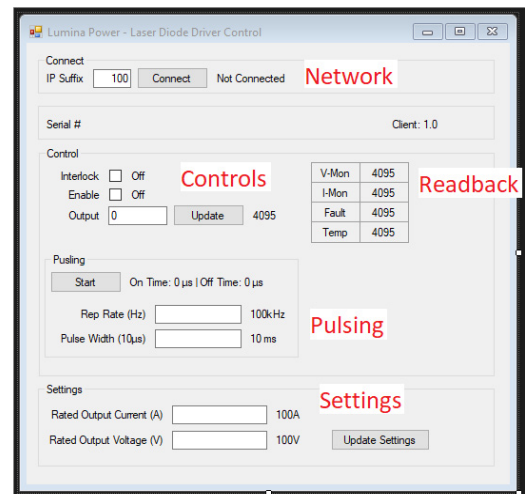
Feature:

- Easily control any Lumina power supply
- Ethernet connection to computer or network
- Graphical interface for setup and control
- Control and monitor all of the functions of the power supply

Dimensions: 6.5 x 3.25 x 1.25 inches



1. DC input
2. Ethernet
3. BNC Pulse



Computer Interface

Ordering Information: Order the LC-Controller by adding the model number to the standard description. Example: LC-Controller-CCPF. This version will control the CCPF series capacitor charging power supplies.

